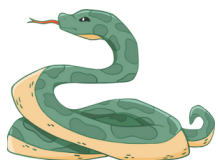
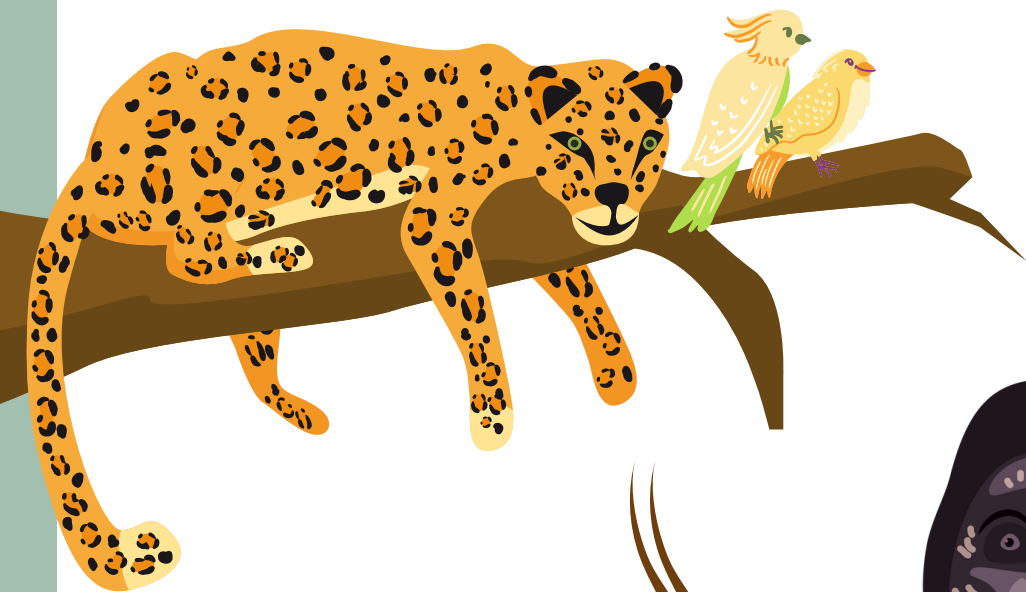


Name

Classifying Animals



Classifying Animals

What is a vertebrate?

What is an invertebrate?

Draw an example of a vertebrate animal below.



Mammals



What are the characteristics of mammals?

Draw an example of a mammal.

A large, empty rectangular box with a thick black border, intended for a child to draw a mammal.

Reptiles

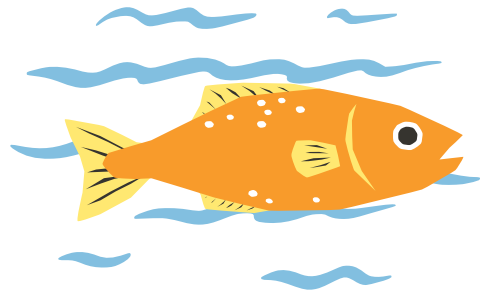


What are the characteristic of reptiles ?

Draw an example of a reptile.

A large, empty rectangular box with a thick black border, intended for drawing an example of a reptile.

Fish



What are the characteristic of fish ?

Draw an example of a fish.

A large, empty rectangular box with a thick black border, intended for drawing a fish.

Birds

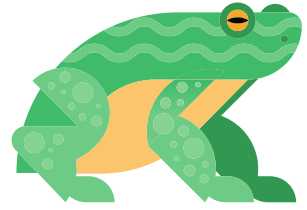


What are the characteristic of birds ?

Draw an example of a bird.

A large, empty rectangular box with a thick black border, intended for drawing a bird.

Amphibians



What are the characteristic of amphibians ?

Draw an example of an amphibians.

A large, empty rectangular box with a thick black border, intended for drawing an example of an amphibian.